

**Beyond Alternative Food Networks:
an agenda for comparative analysis
of Italy's Solidarity Purchase Groups (GAS)
and Districts of Solidarity Economy (DES)
vis-à-vis US "Community Economies"**

Cristina Grasseni, Francesca Forno, Silvana Signori

CORES LAB

Research Group on Sustainable Economies
University of Bergamo

www.unibg.it/cores



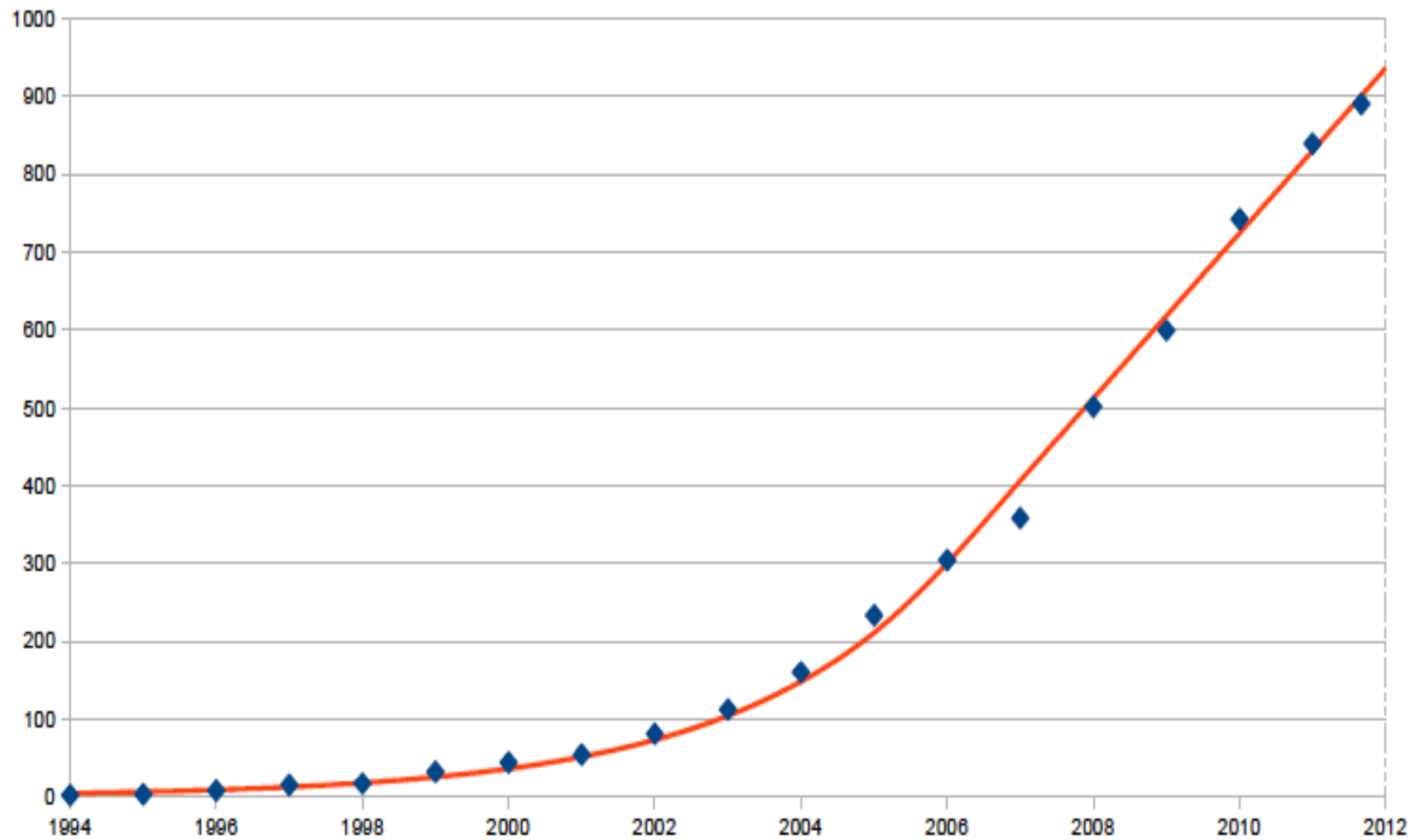
Gruppi di Acquisto Solidale (GAS) = Solidarity Purchase Groups

«Inside Relational Capital» : a CORES survey (2011-2013)

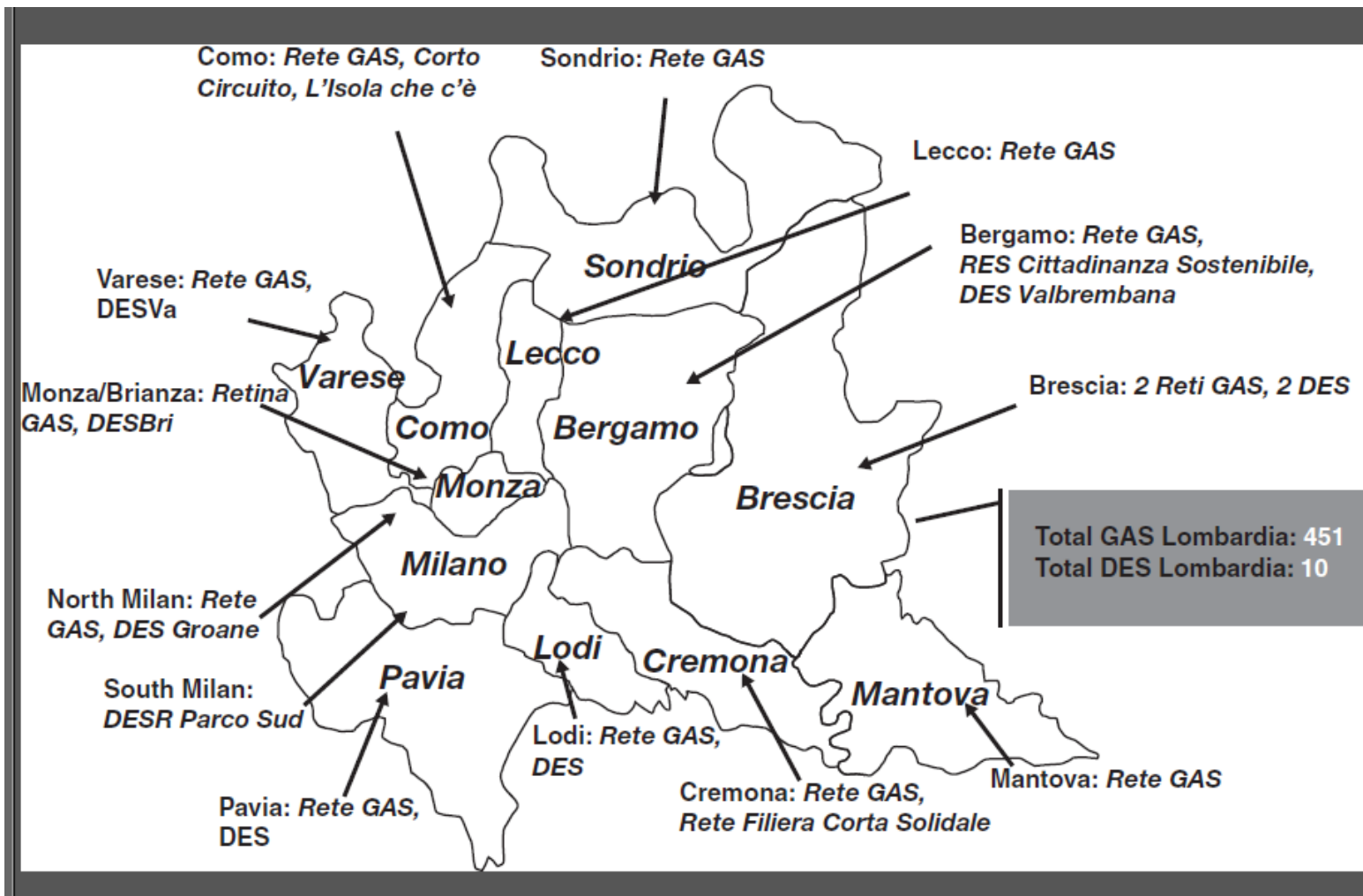
198 group coordinators and 1,651 *gasistas* interviewed in Lombardy
(two-tiered on line survey)

Cities	Group leaders	Gasistas
BG	44	299
BS	26	196
CO	10	42
CR	12	74
LC	1	76
LO	2	49
MB	24	233
MI	45	403
MN	4	39
PV	10	70
SO	3	17
VA	17	153
TOT	198	1651





Growth trend of Solidarity Purchase Groups in Italy,
1994-2012:
From 1 to 1,000 GAS self-registered on www.retegas.org



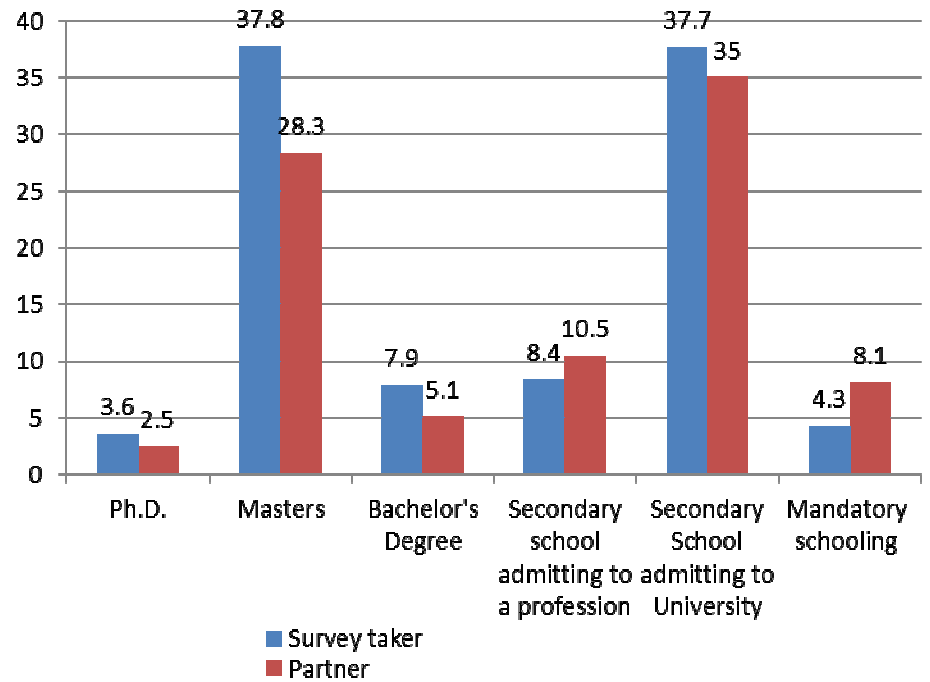
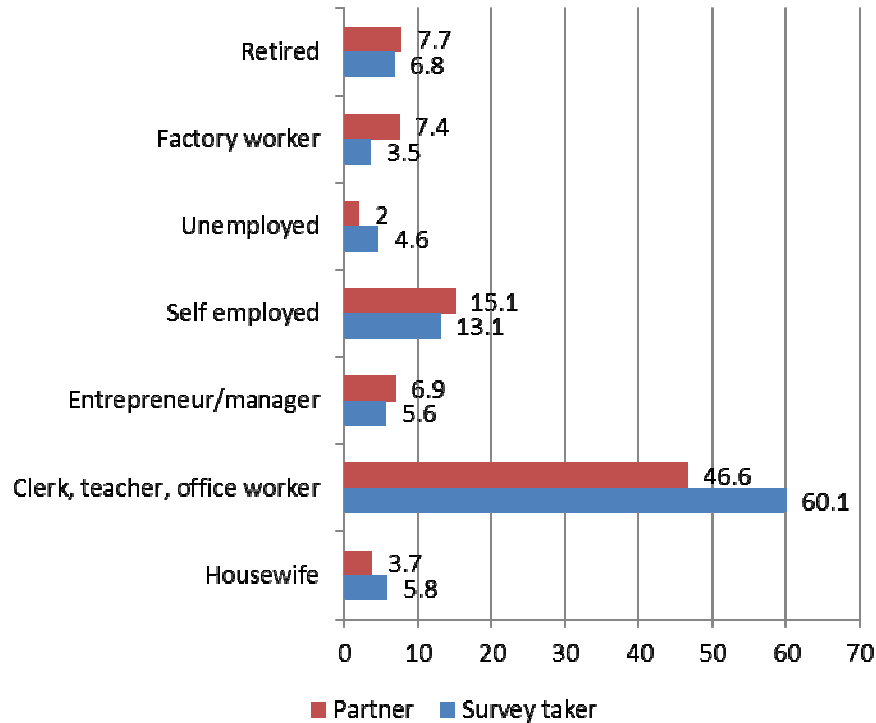
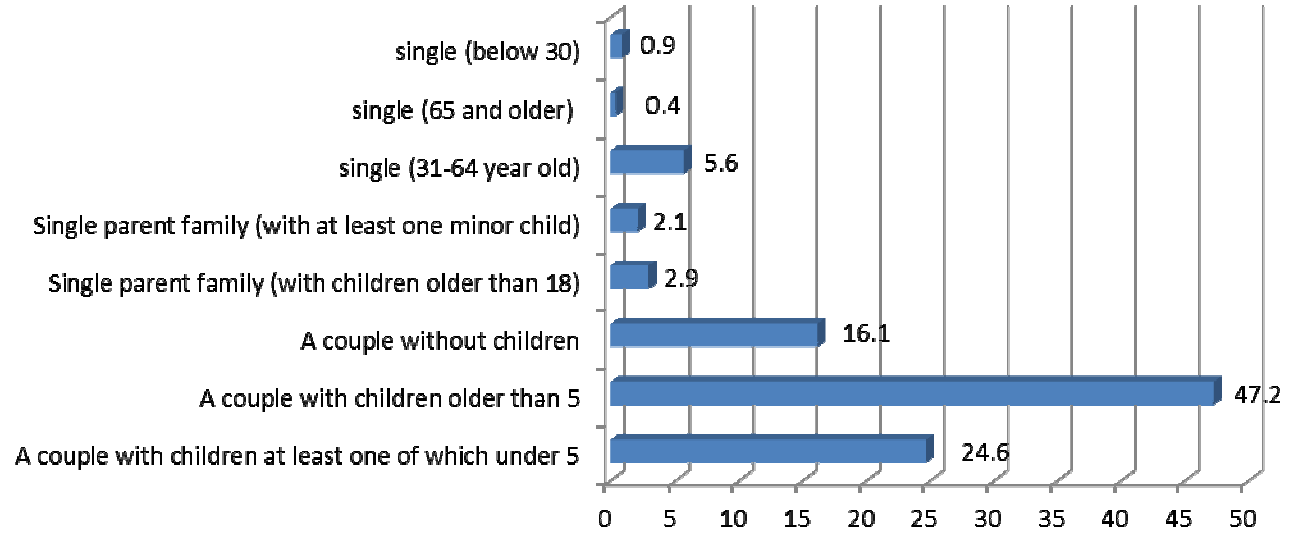
Networks of GAS in Lombardy
and

Distretti di Economia Solidale (DES) = Districts of Solidarity Economy
 (Tavolo RES, www.retecosol.org)

Who are Gasistas?

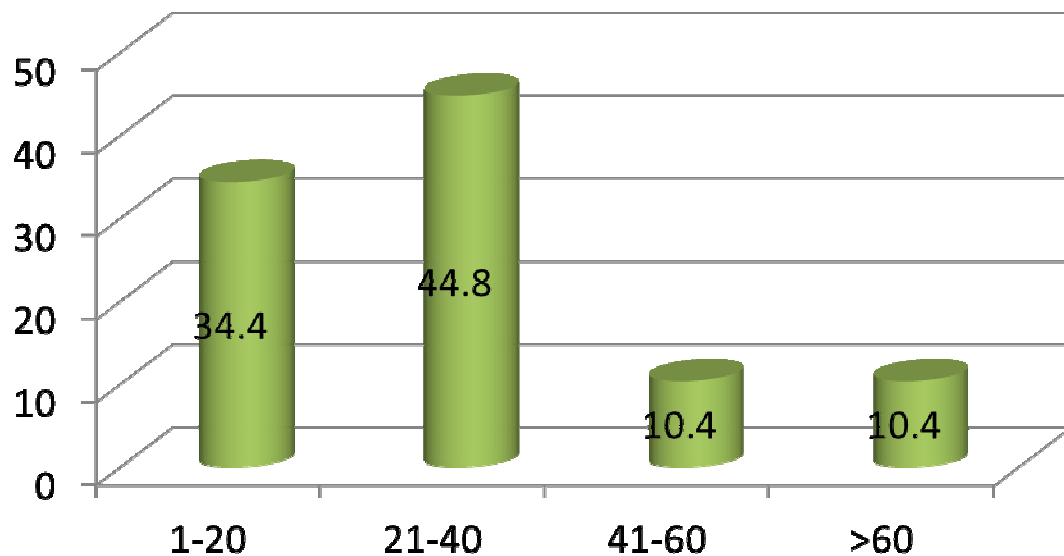
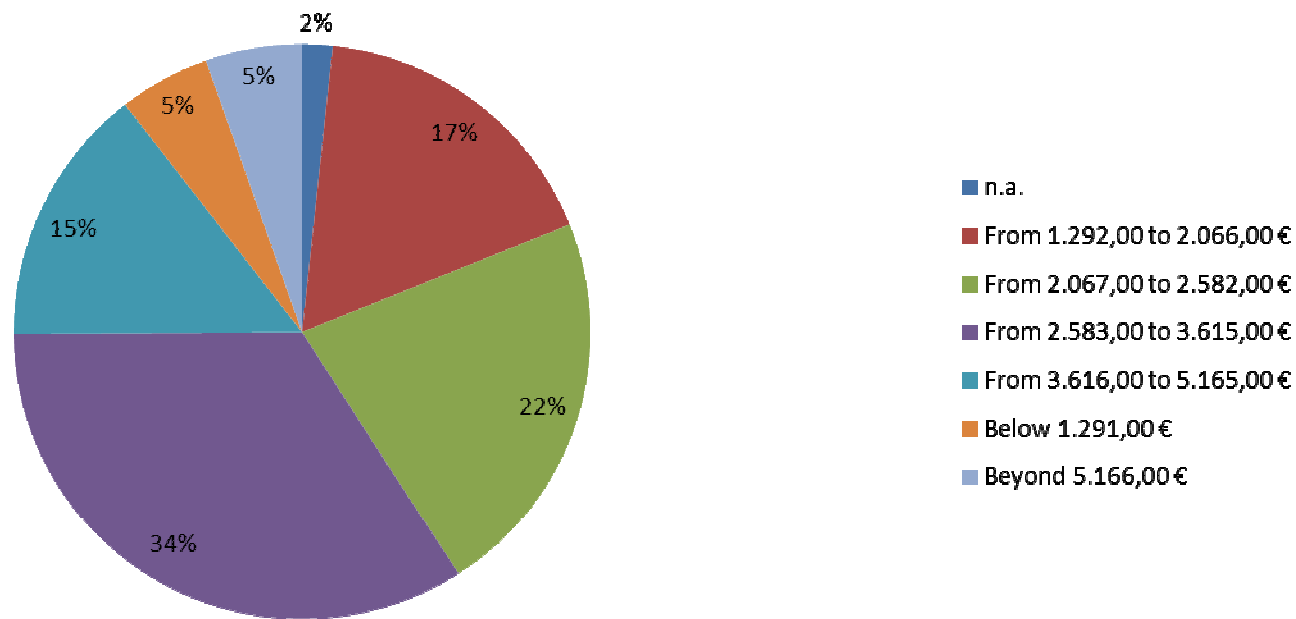
62% of the survey takers were women:

- 49,6% aged between 30 and 44
- 42,9% aged between 45 and 60



Family income

NB Gasistas spend 13% of their family budget through GAS



How many families in any one Group?

Total n. of families involved in the 193 Lombard GAS = 7.083



July 2012. Moments of conviviality at public GAS event in the centre of Bergamo.



September 2010 a Citizenship Market "*Mercato Agricolo e non Solo*", Nembro (BG)





Lombardy: Area	23,844 km ² (9,206 sq mi)
Population	9.917.714
Taxable income per capita (2010)	€ 14.924 ¹

Sicily: Area	25.702 km ² (9,923 sq mi)
Population	5.051.075
Taxable income per capita (2010)	€ 7.772





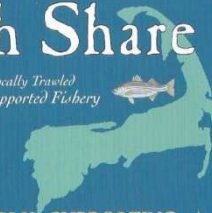
	Increased	Decreased	Introduced	No change	n.a.	Total
Vegetable	50,4	0,4	0,7	47,4	1,2	100
Organic	79,4	0,2	7,7	11,6	1,1	100
Wholemeal	52,9	0,6	10	35,2	1,4	100
Legumes	38,5	0,5	3,7	56,3	1,1	100
Local	80,6	0,2	5,4	12,6	1,1	100
Seasonal	68,1	0,1	2,8	27,8	1,2	100
Cereals	45,1	0,3	12,8	40,5	1,3	100
Meat	3,1	42,5	0,2	52	2,2	100
FairTrade	39,6	1,4	5,6	51,8	1,5	100
mafia- free	44,6	0,6	14,7	38,5	1,5	100
Ecological	41,4	0,6	25	31,9	1,1	100

	Yes	No	Already did	n.a.	Total
Decreased purchasing pre-cooked food	24,8	5,1	69,4	0,7	100
Decreased shopping in supermarket	41,4	47,9	9,7	0,9	100
Increased purchases in local shops	27,5	33	37,9	1,6	100
Started producing food at home	38,3	31,9	29	0,9	100
Started growing vegetable	16,2	54,8	27,6	1,4	100
Started to use less the car	17,6	46,9	34,5	1	100
Increased recycling	32,5	6,7	60	0,9	100
More attention to energy consumption	29,3	22,9	46,3	1,4	100
More attention to water consumption	28,6	6,1	64,3	1	100

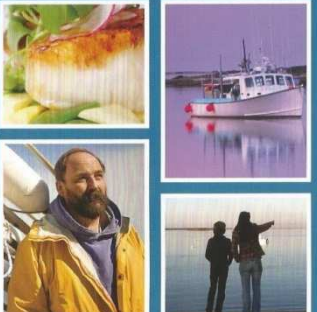
	Yes	No	Already did	n.a.	Total
More interested in problems concerning my town of residence	26	30,3	42,5	1,2	100
More interested in politics in general	7,9	35,8	55	1,3	100
More able to cooperate with people in general	39,7	16,1	42,9	1,4	100
Feeling more able to influence public policy	23,9	60,8	13,8	1,6	100

Cape Cod Fish Share


*Line Caught & Locally Traveled
Community Supported Fishery*



SUSTAINABLY SUPPORTING A
NEW ENGLAND TRADITION



Delicious • Fresh • Local • Healthy • Convenient:
Fresh from the dock, just for you!



CapeCodFishShare.com



SIENNA FARMS
SUDBURY, MASSACHUSETTS

Our Farm. Your Share.
Season 2013

Community Supported Agriculture (CSA) is a collaboration between farmers and their customers to create a farm-to-table culinary experience now available year-round at Sienna Farms' Four-Season CSA.

Join our 2013 CSA in Lovell, MA. Contact Chris and Eve at 978.349.1952.

Farmer Dave's



Community Supported Agriculture

Fresh & local vegetables and fruit, spring through fall

437 Parker Road, Dracut, MA 018.
www.farmerdaves.net
farm@farmerdaves.net
978.349.1952




Towards:

- Community
- Solidarity
- Env. justice
- Food sovereignty
- Active citizenship
- ...?

youth leadership
environmental justice
 worker cooperatives healthy com
social justice social c
 green jobs **economic ju**
 empowere

5 Pleasant St, Ste 3, Worcester, MA 01609 | info@WorcesterRoots.org



SAGE SOLIDARITY AND GREEN ECONOMY
 WorcesterSAGEAlliance.org

MAPPING and ORGANIZING PROJECT
 orgamapping! morganizing!



See: www.communityeconomies.org



L'Aquila, June 2011.
Gasistas visit the
Basilica di Collemaggio, gravely
damaged by the 2009
earthquake.



Solidarity with quaked Parmesan
Makers, May 2012





Lombardy: Area	23,844 km ² (9,206 sq mi)
Population	9.917.714 (one sixth of Italy)
<i>Regional data: GDP (2009)</i>	\$419.500 million (one fifth of Italy)



MA: Area	27,336 km ² (10,555 sq mi)
Population	6,646,144
<i>GDP (2010)</i>	\$377.700 M (2.6% of USA)



COMUNICAZIONE
 INDICAZIONE (VS LE ISTITUZIONI)
 • COMPAGNI DI STRADA
 • VISIONE D'INSTEHE
 • ISOLAMENTO PERCETTIVO
 • REGOLE CONDIVISE

SALVAVANGUARDIA

• COSTRUIRE CON "DELICATEZZA" UN PROGETTO COMUNE
 • COSTRUIRE PERCORSI CONDIVISI

• IMPARARE DALLE ESPERIENZE
 • CONOSCERE ALTRI

Thanks !
www.unibg.it/cores

VALORE ALLA COMUNICAZIONE
 • VOCABOLARIO CREATIVO
 • POETICA

• COME VANNO I GAS IN ITALIA?
 • COM'E HESSA L'AQUIVA? DARE SOSTEGNO
 • ESSERE A L'AQUIVA E' UNA SFIDA!
 • FARE IL PUNTO
 • LEGGI REGIONALI

• COME SI PONE IL CONSUMATORE VS IL PRODUTTORE? I CRITERI!
 • FARRE RETE
 • CONVIUALITA'
 • REALIZZARE UNICA OCCASIONE
 • DIVENTARE BOVINE

Nel Sottobosco
 L'Enneagramma Reminiscenze

SONO QUI COME...
 (SOMMA) IL...
 (SILVIA) CASITA...
 (ALVAREZ) PER...
 (TERESA) PICCOLA...
 (ALDO) CAS + PES...
 (SANTUCCI) SONO...
 (FRANCO) QUI...
 (MARIO) IL...
 (GIULIO) IL...
 (SERGIO) IL...
 (MARIO) IL...
 (GIULIO) IL...
 (SERGIO) IL...

(SOMMA) IL...
 (SILVIA) CASITA...
 (ALVAREZ) PER...
 (TERESA) PICCOLA...
 (ALDO) CAS + PES...
 (SANTUCCI) SONO...
 (FRANCO) QUI...
 (MARIO) IL...
 (GIULIO) IL...
 (SERGIO) IL...
 (MARIO) IL...
 (GIULIO) IL...
 (SERGIO) IL...